

Worldwide Music Player

Quick Operation Guide



Muzee, Get Music Easy!

© Copyright 2008, All Rights Reserved.

未經允許請勿將本手冊以任何型式轉載或修改

Thank you for buying **Muzee**. Before using this product, please check whether your computer meets the hardware and software requirements. The detail User's Manual and Frequently Asked Questions can be found at http://www.muzee.net/mzhhelp_en.htm. If any problem occurs, welcome to email : services@muzee.net

System Requirements

CPU	Intel Pentium III 700 or above Celeron 667 or above AMD Athlon 3500+ or above
Display	VGA
Memory	256MB or above
Free Harddisk Space	10MB above
Networking	ADSL 1Mbps above recommended
USB	USB 1.1 or 2.0
Operating System	Windows XP SP2 / Windows 2000 / Windows Vista
Browser	IE6 / IE7
Windows Media Player	Version 9 or above

Launch

Please plug the dongle into the USB port of your computer, Muzee software will be automatically launched. At the first time, you will be prompted to select the preferred language, please choose the language which you want to use. Then you will be asked to download an ActiveX component. Please feel free to download it and start enjoying the Internet Radio.

Attention

Due to the different versions of OS, language and related software on each computer, Muzee ensures the availability for the most common environment. If some problems occur while launching the Muzee, please check the following settings.

- A. If nothing comes out automatically, please check the setting whether [Auto play] service has been enabled. (**Notice! Only XP Professional version can change this setting, please ignore this item if you are using XP Home version.**) To enable, follow the steps:
Step 1: [Start] → [Run] → Key-in "gpedit.msc" in the Open text field.
Step 2: Select [Computer Configuration] from left side of the window.
Step 3: Expand folder and select [Administrative Templates].

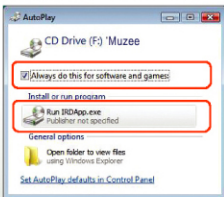
Step 4: Expand folder and select [System].

Step 5: Select [Turn off Auto play] from right side of the window; double click to change the setting to [Disabled].

Step 6: Repeat from step 2, select [User Configuration] and continue step 3 ~ 5.

If you don't want to change this setting, you may launch the program by right clicking the Muzee label which can be found on the disk list shown in [My Computer], and choose [Autoplay] to launch.

- B. If you plug the Muzee into a PC with Windows Vista OS, because of its security control for every software and hardware, the following windows will popup to ask your permission to execute. Please click "Run IRDApp.exe". If you don't want this window to jump out next time, please also check the "Always do this for software and games" box.



- C. If a verification-failed message shows up, please confirm whether your Dongle is legal.
- D. If a connection-failed message shows up, please confirm whether the computer has connected to the Internet.
- E. If the ActiveX fails to download, please go to [Control Panel] → [Internet Explorer] → [Tools] → [Internet options] → [Security] tab → [Custom level] button → find out [Download signed ActiveX controls] item and change it to [Enable].
- F. If it fails to play Internet Radio, please upgrade the Windows Media Player version to 9 series or above.
- G. If none of the above reasons, please confirm whether the company or the Internet Service Provider has setup the firewall to prevent streaming signal transmitting; if the browser contain specific Proxy setting, then it might be cause setup system can NOT prove the authority key. To avoid this problem, please cancel the Proxy setting or move to a clean environment (without Proxy) to setup Muzee.